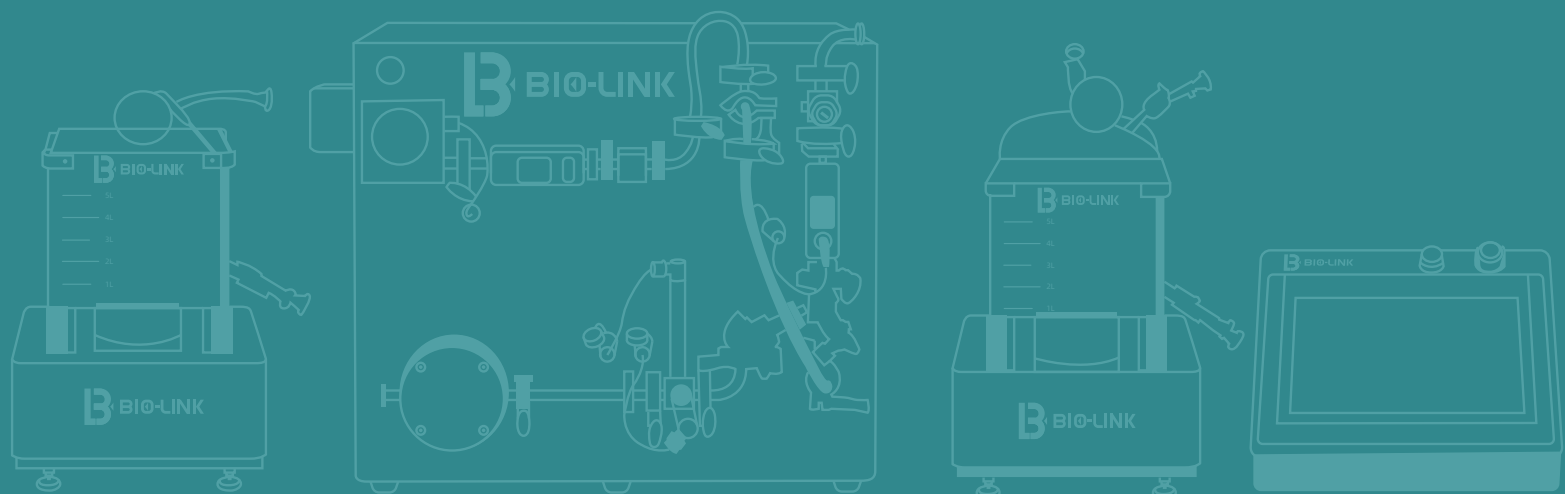




FiltraLinX®

Benchtop Semi-Automatic TFF System



FiltrLinX® Benchtop Semi-Automatic TFF System

FiltrLinX® Semi-Automatic TFF system applies a modular design, available with hollow fiber filters of different specifications, covering the filtration areas from 0.017 m² up to 1.1 m².

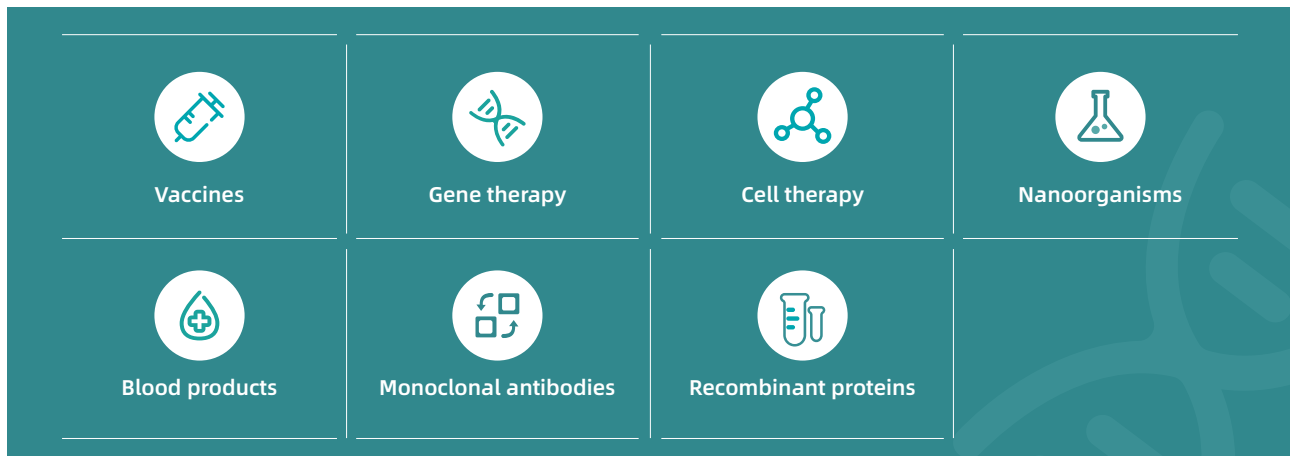
This system is designed compact and practical, with a small circulation volume, making it suitable for high-concentration applications.

The system is equipped with a full set of components, including filtration tank, collection tank, OEM peristaltic pump, four element diaphragm pump, electric proportional control valve, temperature sensor, pressure sensor, ultrasonic flowmeter, and semi-automatic control system, to meet different experimental requirements. The optimization of TMP point can be achieved through the operation interface by adjusting the flow rate, tangential flow, and reflux and permeate pressure. This enables the concentration, diafiltration, desalination, dealcoholization, and other operations for bioproducts such as antibodies, vaccines, blood products, gene therapy drugs, etc.

The system offers functions such as data recording, audit trail, permission management, and features high cost-effectiveness and compliance with relevant regulatory requirements, which makes it an ideal choice for laboratory research and development, pilot production, and small-batch GMP production.



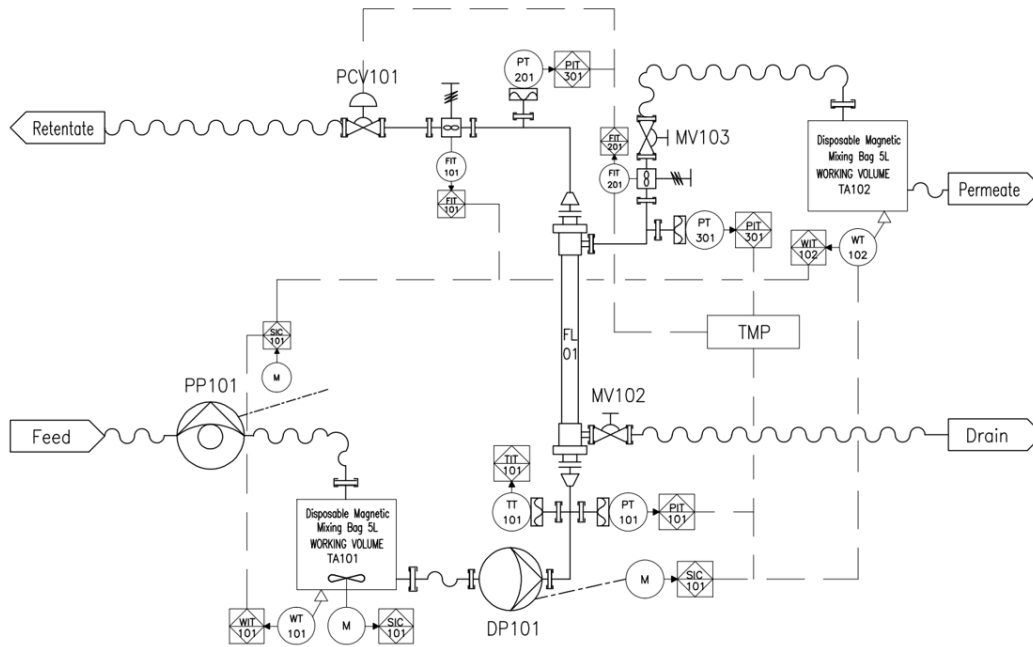
Applications:



Product Features:

- Hollow fiber filtration family with consistency and linearity, which can ensure the seamless transition of process scale-up or scale-down;
- Various specifications available: 0.017-1.1 m² hollow fiber filters;
- Equipped with the electric proportional control valve, pressure sensor, etc., realizing automatic adjustment of TMP;
- Fully functional with data recording, audit trail, permission management, etc.;
- Flexible connections, compatible with single-use storage and mixing bags used for the collection of product concentrations;
- Equipped with filtration tank, used for the temporary storage of the product concentration, defiltration, harvests and clarifications;
- Capable of automatically performing both the water flux test and the filter test;

- With high compatibility, compatible with hollow fiber filters and cassettes membrane;
- The frame is made of wear-resistant 304 stainless steel, and the part in contact with the product is made of 316L stainless steel;
- Polishing for the outer surface $Ra \leq 1.2 \mu\text{m}$, polishing for the part in contact with the product $Ra \leq 0.4 \mu\text{m}$;
- The part in direct contact with the feed liquid is made of sanitary grade materials, such as 316L stainless steel, EPDM/PTFE/TPE, etc. Certifications of the materials are available upon request;
- System pipeline withstands pressure up to 6 bar;
- Full set of accessories including hollow fiber bracket, allowing for use upon arrival directly.



PID Process Flow Diagram

Technical Parameters:

Model	TS-CMV-S01	TS-CMV-S03	TS-CMV-S20
Pump flow rate	60 L/h	180 L/h	1200 L/h
Compatible membrane area	0.017-0.035 m ²	0.017-0.2 m ²	0.1-1.1 m ²
Pipeline i.d. (mm)	7.75 mm	9.4 mm	15.75 mm
Control level	Semi-automatic control		
Operating pressure	Maximum 5 bar		
System pressure resistance	Maximum 6 bar		
Operating temperature	4-60°C		
Bracket baseplate	SS 304		
Pipeline fittings	SS 316L		
Diaphragm pump	SS 316L		
Electric proportional control valve	SS 316L		
Pressure sensor	SS 316L		
Surface finish	Polishing for the surface $Ra \leq 1.2 \mu\text{m}$, polishing for the part in contact with the product $Ra \leq 0.4 \mu\text{m}$		
Sanitary connection	TC chuck		

* Customization available upon request. For details, please consult the local sales or call the hotline 4000589000

Supporting Documents:

- Quality certificates
- GA drawings
- IQ/OQ validation files (optional)
- List of spare parts
- Certificates of the equipment pressure instruments
- System operating manuals
- Material certification: Certification of the SS 316L stainless steel material in contact with the feed liquid
- Certification of the surface finish

Ordering Information:

Product description	Cat. No.	Control system	Circulation system	Filtration tank	Collection tank
Semi-automatic hollow fiber TFF system, applicable for 0.017-0.035 m ²	TS-CMV-S01	√	√	√	√
Semi-automatic hollow fiber TFF system, applicable for 0.017-0.2 m ²	TS-CMV-S03	√	√	√	√
Semi-automatic hollow fiber TFF system, applicable for 0.1-1.1 m ²	TS-CMV-S20	√	√	√	√

*For other accessories, please contact the local sales and technical personnel for details.

About BioLink

BioLink is a group of technology-driven businesses that provide process solutions in the life sciences industry. The company focuses on the development and production of the key processing equipment and consumables used in the manufacturing process of recombinant protein drugs, vaccines, antibodies, cell therapies, gene therapies, and other biological products. BioLink's portfolio of offerings covers the entire upstream and downstream bioprocess such as cell culture, single-use mixing and storage, chromatography, filtration (ultrafiltration/diafiltration, clarification, and virus removal), and hydration products, as well as process development services. BioLink is committed to providing customers with high-quality, innovative products and solutions and strives to build an efficient, safe and competitive biopharmaceutical supply chain eco-system.

 info@biolink.com

BioLink is the trademark of all operating companies offering services of Bio-Link Biological Applied Technologies (Shanghai) Co., Ltd.; FiltraLinX is the registered trademark of BioLink products.

© 2024 All sales of products and services must abide by the terms and requirements of sale of all BioLink operating companies.

BioLink provides sales and application support for all products. BioLink reserves the right to change the quantities and functions described in this document. For the latest information, please contact BioLink.

Document No.: BLK-BR-20240617-01-EN