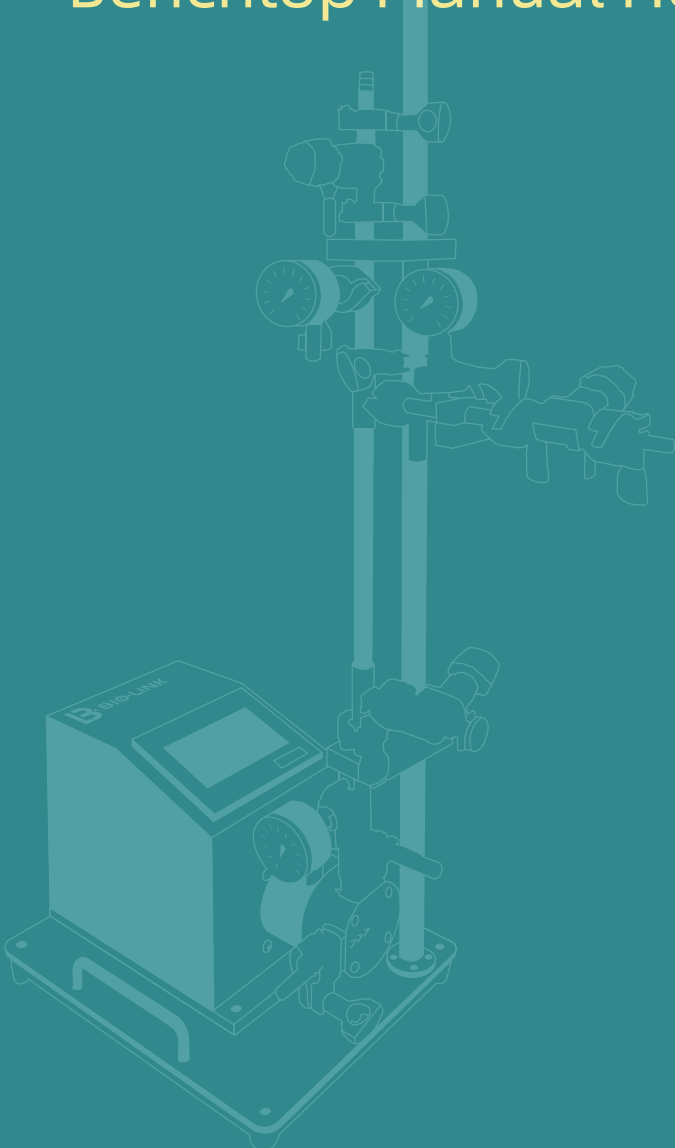




FiltraLinX[®]

Benchtop Manual Hollow Fiber TFF System



FiltrLinX® Benchtop Manual Hollow Fiber TFF System

FiltrLinX® Benchtop Manual Hollow Fiber TFF system adopts a modular design and can be equipped with different specifications of hollow fiber filters to achieve a filtration area of 0.017-5.1 m².

This system is designed compact and practical, with a small circulation volume, making it suitable for high-concentration applications.

Depending on the process requirements, a low-shear four element diaphragm pump is selected as the circulating pump, and it is equipped with a touchscreen speed control panel. The system allows for adjusting flow rate on the panel to control tangential flow, and achieving the optimization of TMP point by adjusting the pressure at the reflux and permeation ends, thus realizing the concentration, diafiltration, desalination, dealcoholization and other operations for bioproducts such as antibodies, vaccines, blood products, and gene therapy drugs.

With high cost-effectiveness and compliance with relevant regulations, the system is an ideal choice for lab-scale R&D, pilot-scale production, as well as GMP production of specific varieties.



Applications:



Vaccines



Gene therapy



Cell therapy



Nanoorganisms



Blood products



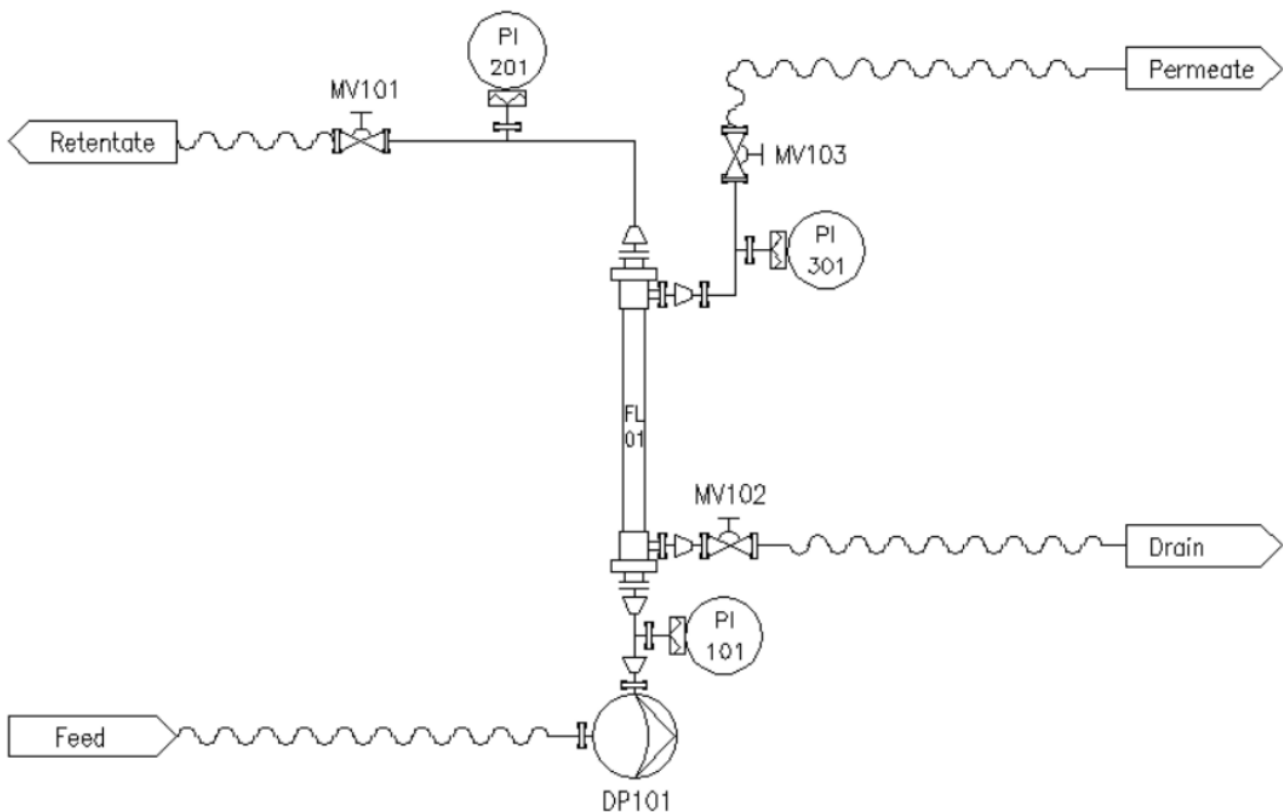
Monoclonal antibodies



Recombinant proteins

Product Features:

- Hollow fiber filtration family with consistency and linearity, which can ensure the seamless transition of process scale-up or scale-down;
- Available in various specifications: 0.017-5.1 m² hollow fiber filters;
- Flexible connections, compatible with single-use storage and mixing bags used for the collection of product concentrations;
- Equipped with manual valves, circulating pumps, pressure gauges and other components to achieve manual adjustment of reflux and permeate end pressure;
- Can be equipped with peristaltic pumps for feeding;
- Can be equipped with filtration tank used for product concentration, defiltration and temporary storage of harvests and clarifications;
- Allowing for a water flux test, and a membrane integrity testing port is reserved;
- Capable of using flat sheet membrane;
- Wear-resistant 304 stainless steel for racks and 316L stainless steel for product contact parts;
- External surface finish $R_a \leq 1.2 \mu\text{m}$, the finish of product contact parts $R_a \leq 0.4 \mu\text{m}$;
- The parts in direct contact with the feed liquid are made of sanitary-grade materials, such as 316L stainless steel, EPDM/PTFE/TPE. Material certificates are available;
- System pipeline withstands pressure up to 6 bar;
- Optional pressure gauges with qualified measurement and suitable ranges;
- The system is equipped with fixtures and complete accessories, which can be used directly upon arrival.



PID Process flow diagram

Technical Parameters:

Equipment model	TS-HMV-D01	TS-HMV-Q03	TS-HMV-Q20	TS-HMV-Q40
Pump flow rate	60 L/h	180 L/h	1200 L/h	2500 L/h
Compatible membrane area	0.017-0.035 m ²	0.017-0.2 m ²	0.1-1.1 m ²	0.53-5.1 m ²
Pipeline i.d. (mm)	7.75 mm	9.4 mm	15.75 mm	22.1 mm
Control level	Manual			
Operating pressure	Max. 5 bar			
System pressure resistance	Max. 6 bar			
Operating temperature	4-60°C			
Bracket baseplate	SS 304			
Pipeline fittings	SS 316L			
Diaphragm pump	SS 316L			
Manual diaphragm valve	SS 316L			
Diaphragm pressure gauge	SS 316L			
Surface finish	Surface finish Ra ≤ 1.2 µm, the finish of product contact parts Ra ≤ 0.4 µm			
Sanitary connection	TC chuck			

* Customization available upon request. For details, please consult your local sales representative or call our hotline at 4000589000.

Supporting Documents:

- Quality certificates
- GA drawings
- IQ/OQ validation documentation (optional)
- List of spare parts
- Certificates of the equipment pressure instruments
- System operating manuals
- Material certificate: SS 316L stainless steel in contact with the feed liquid
- Certification of the surface finish

Ordering Information:

Product description	Cat. No.	Power pump	Feeding pump	Valve	Pressure gauge
Manual Hollow Fiber TFF System, suitable for 0.017-0.035 m ²	TS-HMV-D01	√	Optional	√	√
Manual Hollow Fiber TFF System, suitable for 0.017-0.2 m ²	TS-HMV-Q03	√	Optional	√	√
Manual Hollow Fiber TFF System, suitable for 0.1-1.1 m ²	TS-HMV-Q20	√	Optional	√	√
Manual Hollow Fiber TFF System, suitable for 0.53-5.1 m ²	TS-HMV-Q40	√	Optional	√	√

* For other accessories, please contact your local sales representative and technician for advice.

www.biolink.com



About BioLink

BioLink is a group of technology-driven businesses that provide process solutions in the life sciences industry. The company focuses on the development and production of the key processing equipment and consumables used in the manufacturing process of recombinant protein drugs, vaccines, antibodies, cell therapies, gene therapies, and other biological products. BioLink's portfolio of offerings covers the entire upstream and downstream bioprocess such as cell culture, single-use mixing and storage, chromatography, filtration (ultrafiltration/diafiltration, clarification, and virus removal), and hydration products, as well as process development services. BioLink is committed to providing customers with high-quality, innovative products and solutions and strives to build an efficient, safe and competitive biopharmaceutical supply chain eco-system.

 info@biolink.com

BioLink is the trademark of all operating companies offering services of Bio-Link Biological Applied Technologies (Shanghai) Co., Ltd.; FiltraLinX is the registered trademark of BioLink products.

© 2024 All sales of products and services must abide by the terms and requirements of sale of all BioLink operating companies.

BioLink provides sales and application support for all products. BioLink reserves the right to change the quantities and functions described in this document. For the latest information, please contact BioLink.

Document No.: BLK-BR-20240207-01-EN