



BioHub[®] SC

Sterile Cutter



In the single-use fluid technology, the sterile disconnection route of the tubing can be realized by multiple means. In which, BioHub® SC is a compact device that is intuitive, reliable, and easy to use and that integrates the sterile disconnection and sealing functions all in one. In a matter of seconds, the single-use tubing can be firmly squeezed to be cut into two independent sterile fluid tubings. This disconnecting tool has manual or electric two types.

Applications:

- Sterile disconnection of sampling tubings
- Sterile disconnection of feeding tubings
- Sterile transfer of other liquids such as intermediates and primary liquid

Product Features:

- Secure a Sterile Fluid Path

In a non sterile environment, apply a simple “Press-Cut” act to the metal ring and the single-use tubing to complete sealing and disconnection respectively for the fluid tubing, so as to realize sterile disconnection of the tubing

- Lightweight, Portable, Easy and Efficient

The product is small and light, independent of utilities, easily movable to wherever you need it, disconnection time as short as 5 seconds, all of which enhances productivity

- Wide Application Coverage and Powerful Flexibility

There is no tubing material limit. Applicable for either TPE tubing or silica gel tubing. Suitable for the sterile disconnection of tubings with diameter OD1/4” -OD3/4” , also, for whether an empty tubing, liquid-contained tubing or pressurized tubing

- Meticulous Workmanship and After-sales Guarantee

Even coating, smooth surface, mechanical design, low fault rate, and when the cutter jaw reaches the upper limit times, its returnable maintenance is available

- Rigorous Quality Control and Validation

Rigorous validation has been conduct on the single-use metal disconnection system components to ensure the continuous stability of a sterile disconnection and avoid unnecessary losses caused by cross contamination of customer products

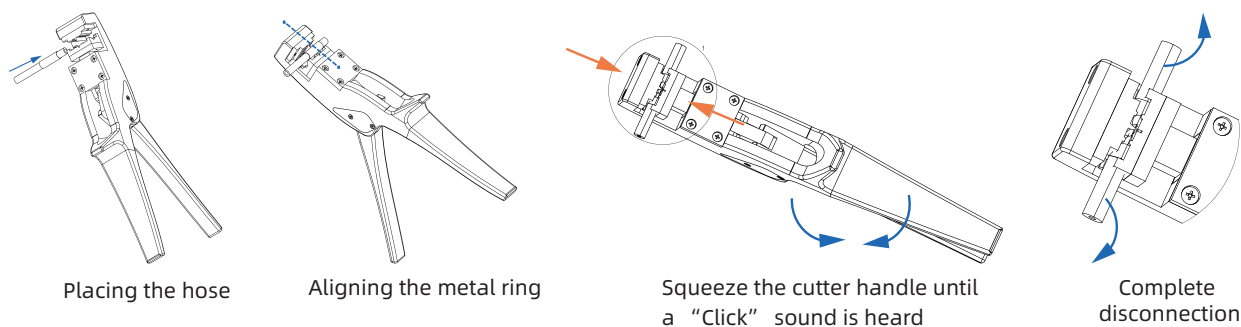


Manual Sterile Cutter

Electric Sterile Cutter

Easy Operation (taking a manual cutter as an example)

During production, sterile disconnection of a metal ring by a single person is an easy-to-realize operation.



1. Use the Sterile Cutter to place the metal ring to be disconnected at the center from top to bottom of the cutting port
2. Press hard tactfully and then disconnect the tubing
3. The cutting site is securely sealed to form two independent sterile tubings

Product Parameters

Manual Cutter:

Parameters	Description
Material	Aluminum alloy is adopted for overall design, and the cutting jaw is made by the ZrN-coated steel produced from the chromium molybdenum vanadium gold powder metallurgy
Applicable tubing diameters	ID1/8" —OD1/4"
Weight	580 g

Electric Cutter:

Parameters	Description
Material	Aluminum alloy is adopted for overall design, and the cutting jaw is made by the ZrN-coated steel produced from the chromium molybdenum vanadium gold powder metallurgy
Applicable tubing diameters	Cutting jaw for small diameter tubing 1/4" * 7/16"
	Cutting jaw for large diameter tubing 3/8" * 5/8" , 1/2" * 3/4"
Voltage	12 V (storage battery)
IP grade	IP43
Weight	3kg

Order Information:

Item	Product code
Manual Sterile Cutter	BLKH CUT01
Electric Sterile Cutter	BLKE CUT02

www.biolink.com



About Bio-Link

Bio-Link Biological Applied Technologies (Shanghai) Co., Ltd. (Bio-Link) is a group of technology-driven businesses that provide products and process solutions in the life sciences industry.

The company focuses on the development and production of the key processing equipment and materials for vaccines, antibodies, cell therapies, gene therapies and other biological products. Bio-Link's portfolio of offerings cover the entire upstream and downstream bioprocess such as cell culture, single-use mixing and storage, chromatography purification, filtration and ultrafiltration, as well as process development services. Bio-Link is committed to providing customers with high-quality, innovative products and solutions and strives to build an efficient, safe and competitive biopharmaceutical supply chain eco-system.

✉ info@biolink.com

Bio-Link is the trademark of all operating companies offering services of Bio-Link Biological Applied Technologies (Shanghai) Co., Ltd., and BioHub is a registered trademark for Bio-Link products.

© 2022 All sales of products and services must abide by the terms and requirements of sale of all Bio-Link operating companies.

Bio-Link provides sales and application support for all products. Bio-Link reserves the right to change the quantities and functions described in this document. For the latest information, please contact Bio-Link.

Document no.: BLK-BR-20221109-01-EN